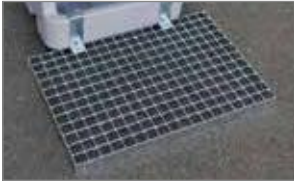


PE Boot cleaner

- made from high quality UV stabilised polyethylene
- equipped with three fixed brushes and a hand brush with hose
- water connection 1/2"
- stainless steel fittings
- integral tray to collect dirty water and enable disposal with 1 1/2" connection
- integral hand grips



Accessory:
Scraper grate
for coarse dirt



integral tray to collect dirty water and enable disposal with 1 1/2" connection

Description	Dimensions cm (l x w x h)	Weight approx. kg	Order no.
PE Boot cleaner	52 x 47 x 90	15	10101
Accessory: Scraper grate for coarse dirt	43 x 60 x 14.5	5.2	10741

Boot cleaner ECO [PG 8]

- frame made of stainless steel
- equipped with three fixed brushes
- 1/2" water connection (Gardena)
- stainless steel lines
- with holder



Accessory:
Scraper grate
for coarse dirt

Boot cleaner
ECO



Description	Dimensions cm (l x w x h)	Weight approx. kg	Order no.
Boot cleaner ECO	33 x 33 x 82	5.6	10588
Accessory: Scraper grate for coarse dirt	28 x 40 x 4	1.1	10589

Rinsing tray [PG 8]

- from highly resistant GRP
- impact and scratch-proof, as well as resistant to high temperatures.
- discharge with plug
- 1 1/4" with discharge connection



Rinsing tray 75



Rinsing tray 100

Description / Capacity L	Dimensions cm (l x w x h)	Order no.
Rinsing tray 75	80 x 55 x 30	1086
Rinsing tray 100	105 x 55 x 30	1087

Accessories for rinsing tray

Description	Dimensions cm (l x w x h)	Order no.
Wall bracket, galvanised, 46 cm wide		1088
Floor frame from galvanised steel tube	for rinsing tray 75 L	83 x 56 x 81
	for rinsing tray 100 L	108 x 56 x 81
Drainage hose plastic with screw connector		1091

Technical specifications subject to change.